


# **International Abalone Society**

[www.abalone.cenrm.uwa.edu.au](http://www.abalone.cenrm.uwa.edu.au)



# THE WORLD ABALONE MARKET: AN UPDATE ON PRODUCTION FROM USA AND OTHER COUNTRIES

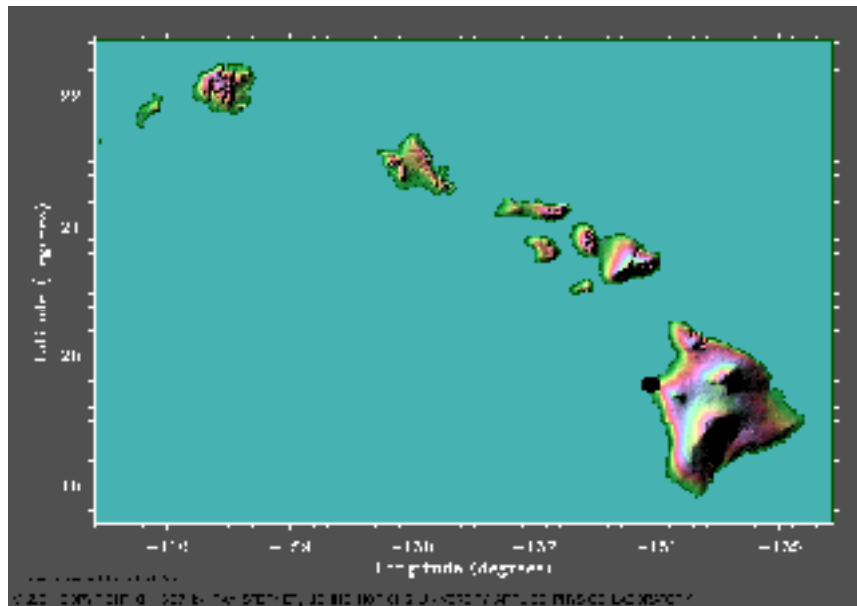
Ray Fields  
Peter Cook  
Roy Gordon



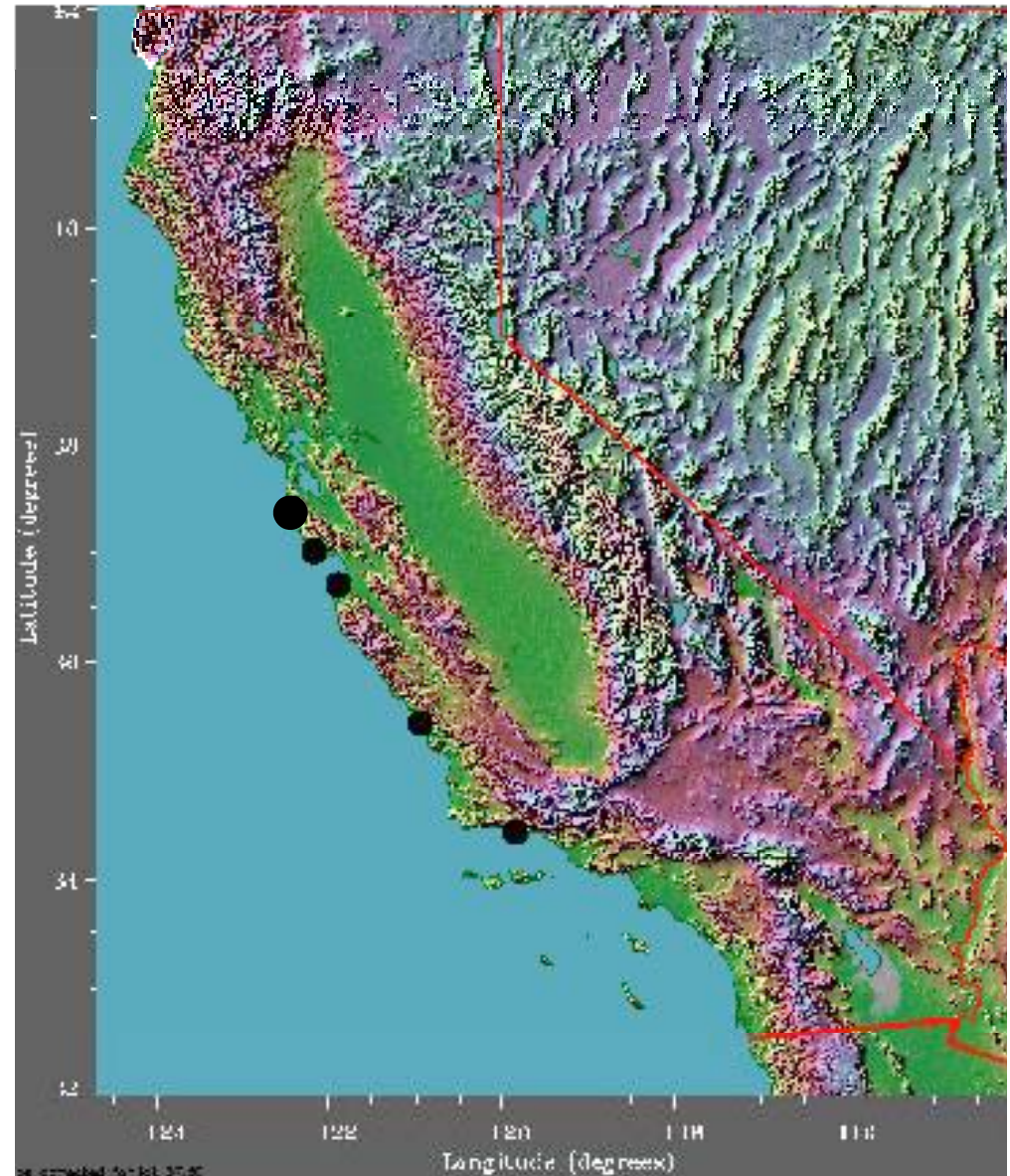
**FISHTECH**



# USA Abalone Farms



● = Abalone Farms



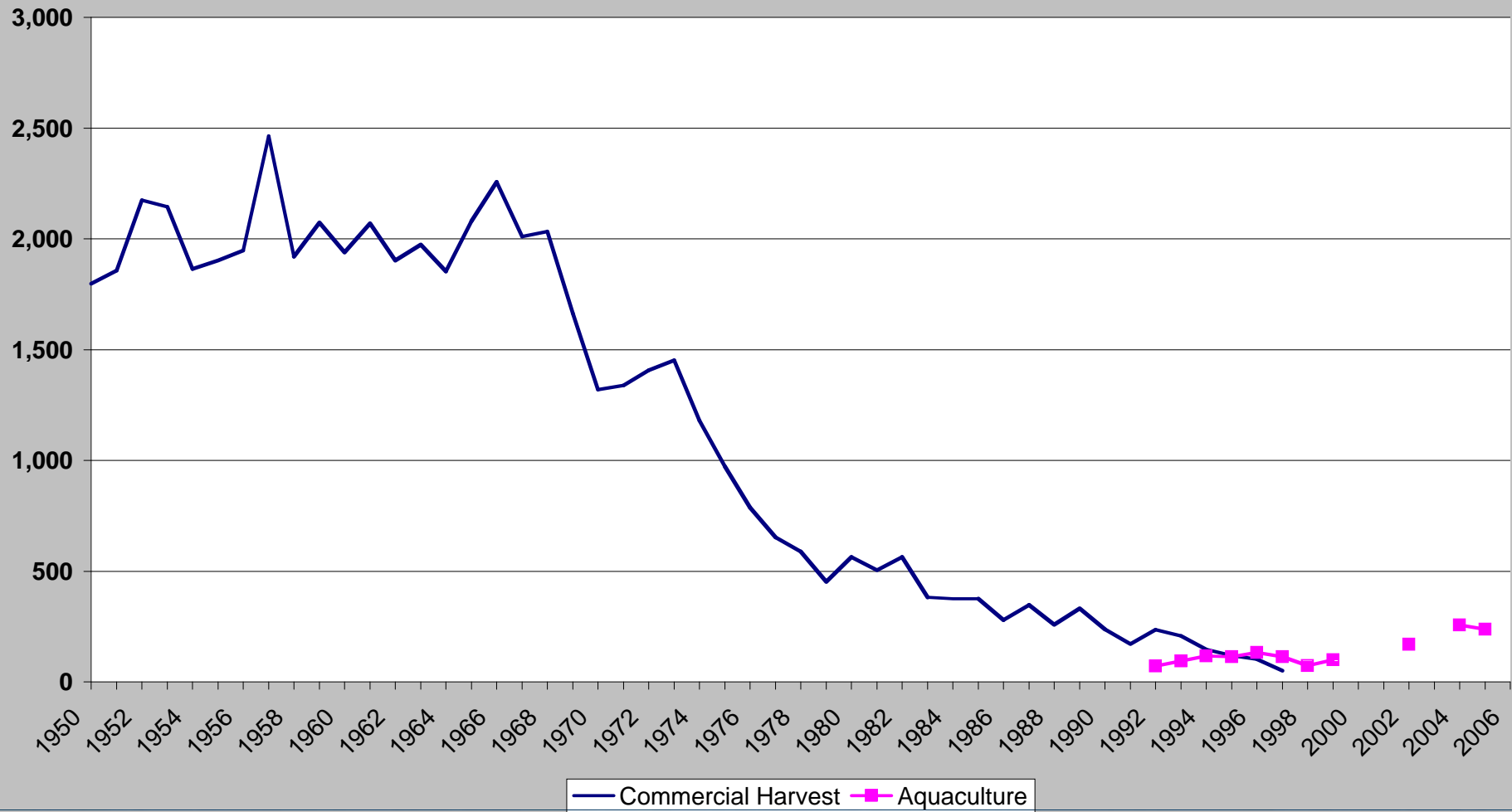
Farm Raised California Red Abalone  
*Haliotis rufescens*





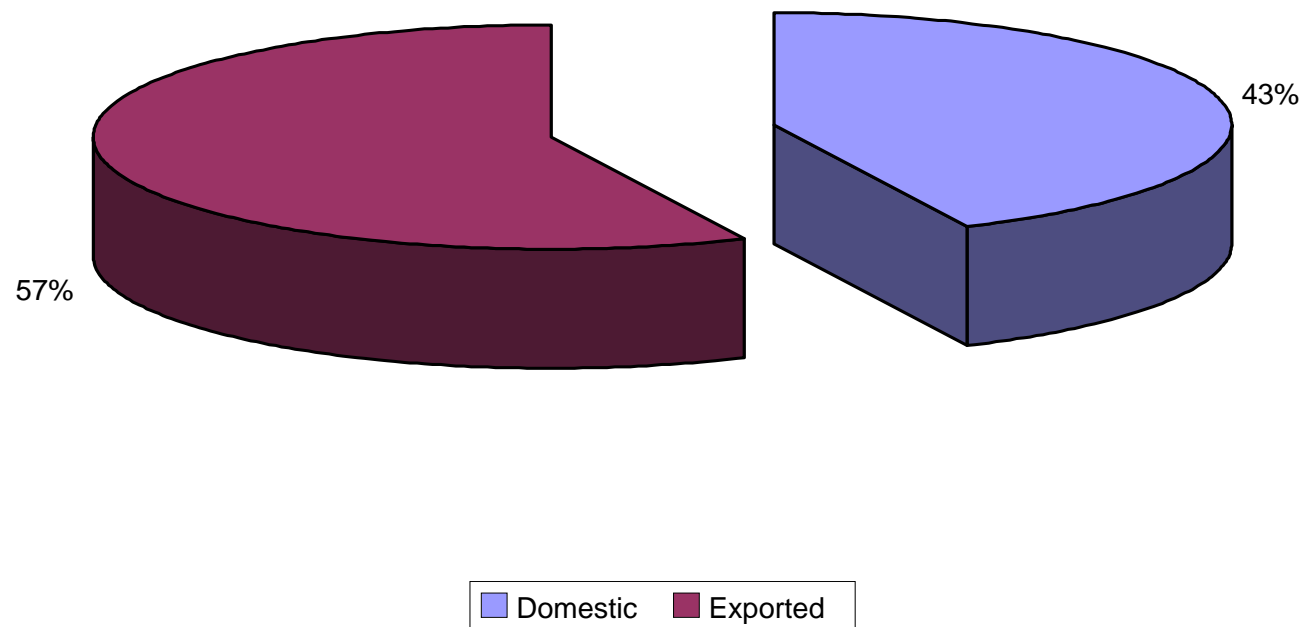


### California Abalone Landings (Metric Tons)





# 2005 Abalone Market

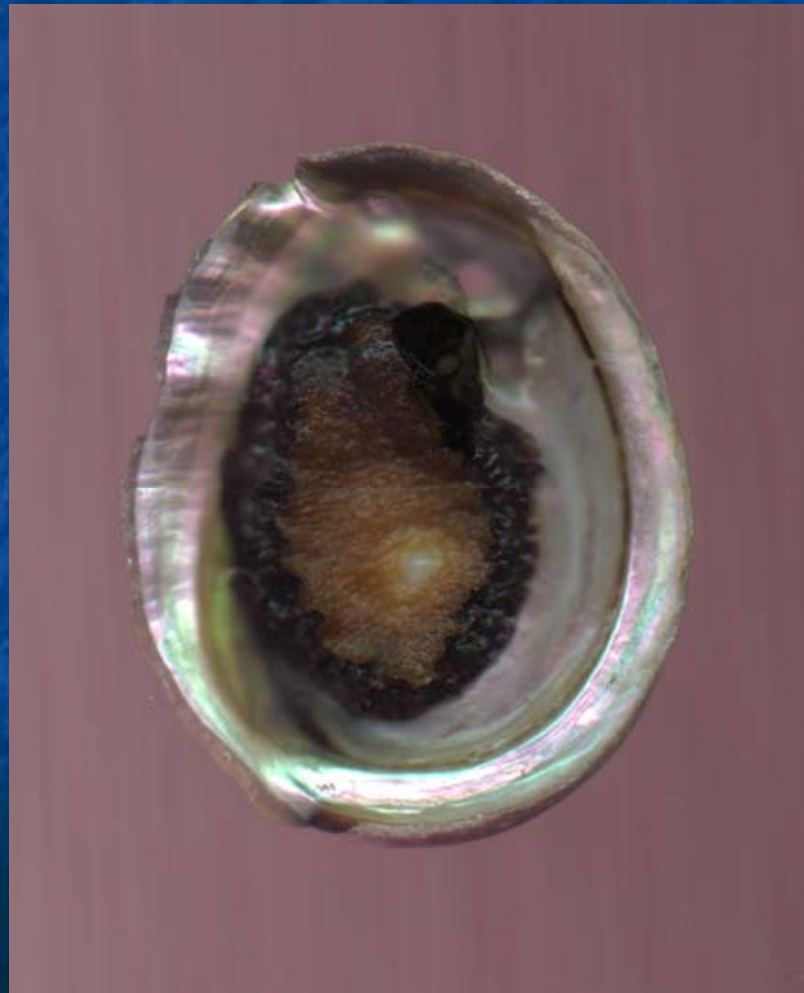


Abalone shell with severe infestation of the sabellid worm  
*Terrabrasabella heterouncinata*





# Farm raised red abalone with severe Withering Syndrome



## 2008-09 FARM PRODUCTION - California

13 Farms

95% *Haliotis rufescens* (Red abalone)

Just over 50% exported

One leading farm – 120mt

Most other farms +/- 20mt

Total production – 253mt (US\$9+million)

Hawaii – about 80mt



# THE WORLD ABALONE MARKET: AN UPDATE ON PRODUCTION FROM KOREA



**FISHTECH**





## **KOREAN ABALONE PRODUCTION**

**Explosive production increases of 60 times in the past 9 years to a total of over 4,500mt in 2007, maybe as much as 7000 – 8000mt in 2008.**

**80% of production is in remote Wando County in South Jeolla Province.**

**Majority of the production is *H.discus hannai***

**85% of production is exported (mostly to Japan).**

## **KOREAN ABALONE FARMS**

**More than 1000 farms. Various grow-out systems, most in sea.**

**The majority of farms are very small scale producers**

**The distribution process is problematic, with middle men often charging the producers 30% and more.**

**Production control, restructuring of distribution channels and consumption expansion are needed for sustainable development Korea's abalone farming industry.**

**Current depressed prices may reduce future production below 2008 levels. However, abalone (large and small) now popular in all Korean sea food markets.**













전복 4마리 만원

전복 3마리 만원

마주산업  
MJU INDUSTRY  
설비·V.C. 설치·관리·수리  
TEL: 923-6282, A/S: 926-6117  
www.mju.co.kr

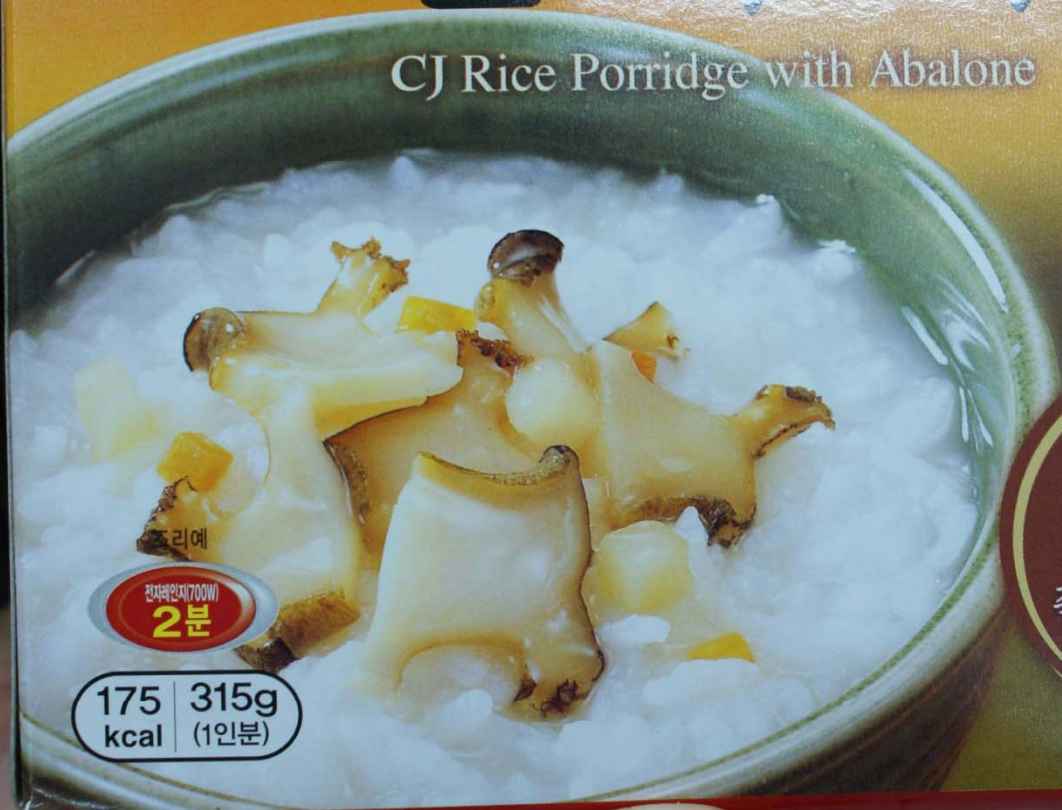




햇반

# 전복죽

CJ Rice Porridge with Abalone



조리예

전자레인지(700W)

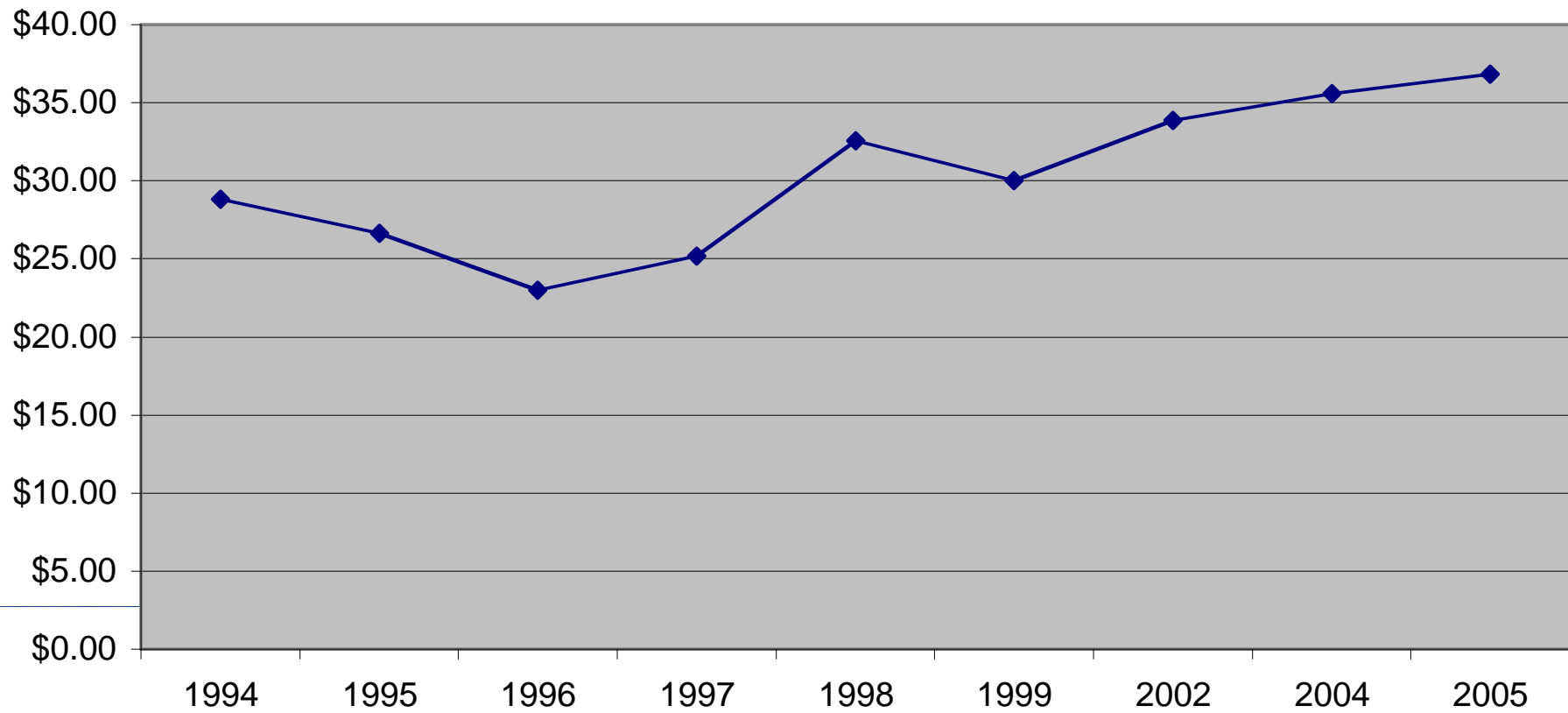
2분

175  
kcal

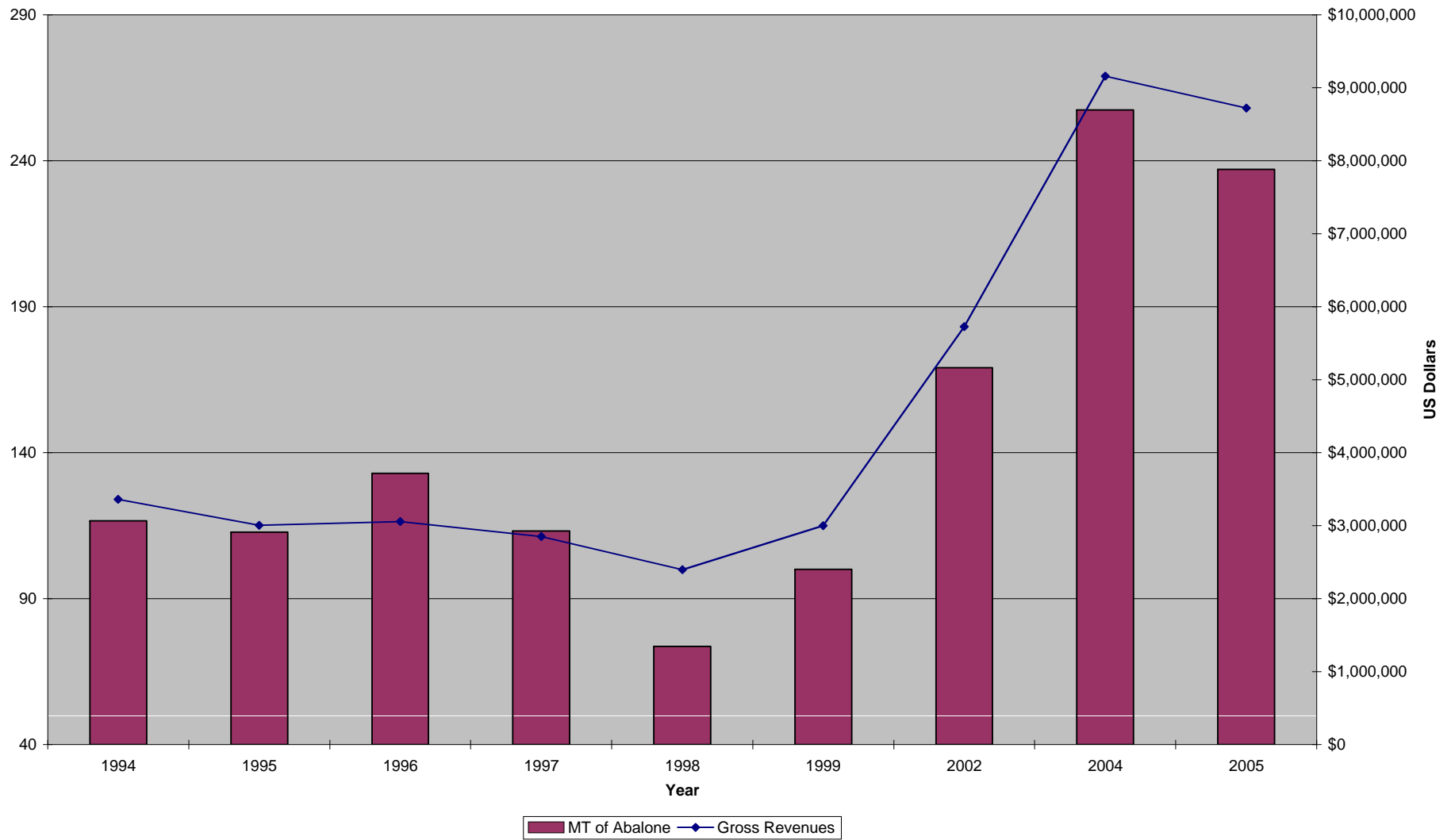
315g  
(1인분)

햇반에  
사용하는  
좋은 쌀로  
만듭니다.

## Average Price (\$US)/Kg



### USA Abalone Aquaculture





### Actual vs Projected Abalone Production

